

Issued by Canon(UK) Limited

Model:

iR C6800C
iR C6800CN

Ref No.:

(F2-T01-0M3-10027-01
(iR6800C-010)

Date:

30-07-04

Location:

Vertical Size Detection Kit Installation

Subject:

Remedy Against the Glare of Scanning Lamp

Background

Reports of users complaining about the glare of the scanning lamp have been filed, and a vertical size sensor kit (AB/Inch) will be offered as a remedial kit.

Vertical Size Sensor Kit (AB) FM2-0646

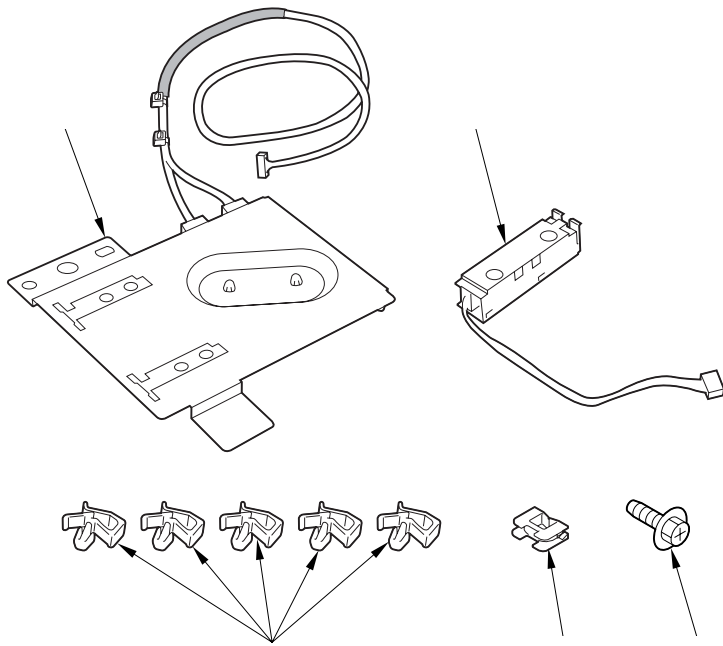
Vertical Size Sensor Kit (Inch) FM2-0647

Overview

The use of a reflection type size sensor in both main and sub scanning directions will eliminate the need for the machine to execute size detection using its CCD, thus permitting the detection of original size without having to turn on the scanning lamp.

It is important that the user be fully informed of the following changes in regard to detection size. Moreover, the installation of the vertical size sensor kit (Inch; FM2-0647) calls for upgrading the reader controller software to version 9.02 (iR C6800 Series) or later.

	AB-Configuration	Inch-Configuration
Size Detection by a CCD	B6, B5R, A5, A4R, B5, B4, A4, A3	STMT-R, STMT, LTR-R, LEGAL, LTR, 11"×17" (279mm×432mm)
Size Detection by a Reflection Type Sensor	B5R, A4R, B5, B4, A4, A3	LTR-R, LEGAL, LTR, 11"×17" (279mm×432mm)

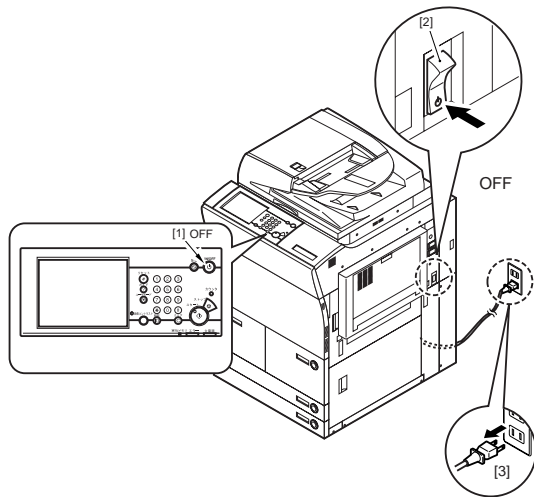


2. Installation

2.1 Installing to the Host Machine

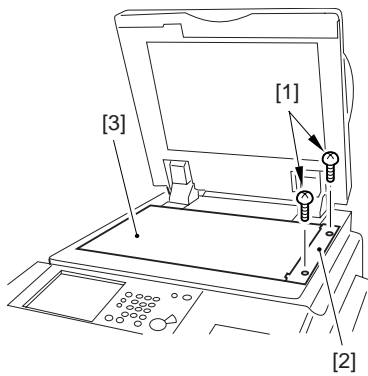
⚠ Be sure to go through the following in strict sequence before starting the work:

1. Turn off the control panel power switch [1].
 2. Turn off the main power switch [2].
 3. Disconnect the power cable [3] from the power outlet.
-



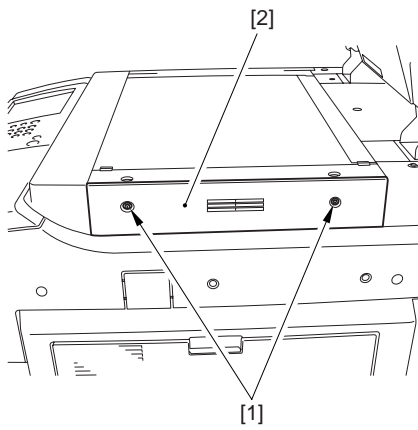
F-2

- 1) Remove the 2 screws, and detach the right glass retainer [2]; then, detach the copyboard glass [3].



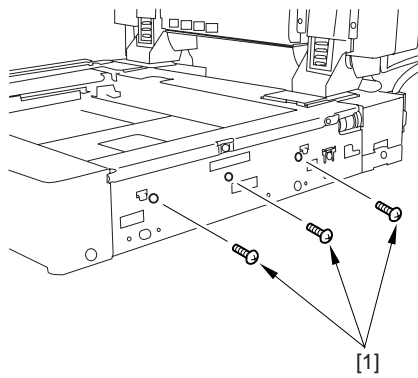
F-3

2) Remove the 2 screws [1], and detach the reader unit right cover [2].

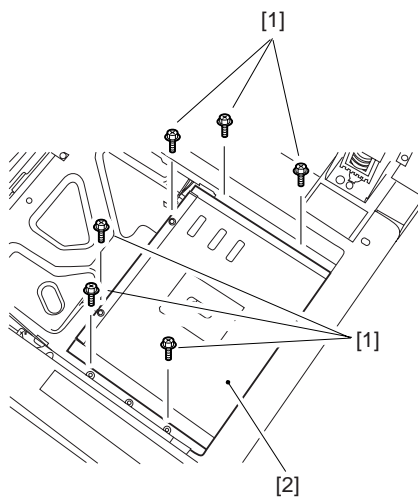


F-4

3) Remove the 9 screws [1], and detach the CCD unit cover [2].

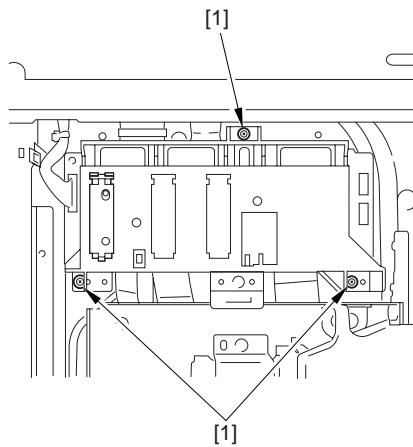


F-5



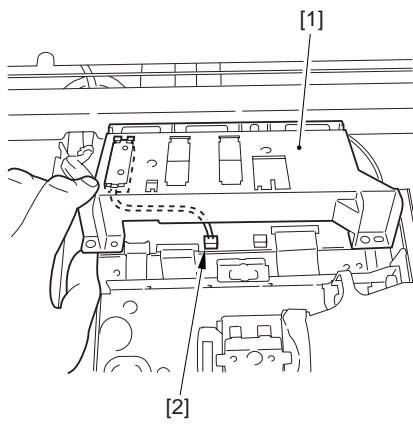
F-6

4) Remove the 3 screws [1].



F-7

5) Lift the original size detection unit [1] slightly; then, disconnect the connector [2].



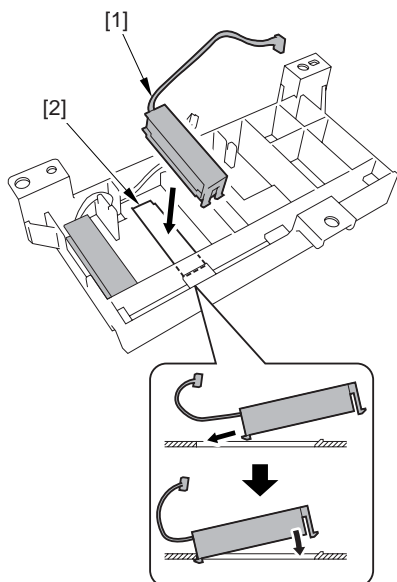
F-8

6) Mount the included horizontal size sensor [1] to the original size detection unit [2].

Note:

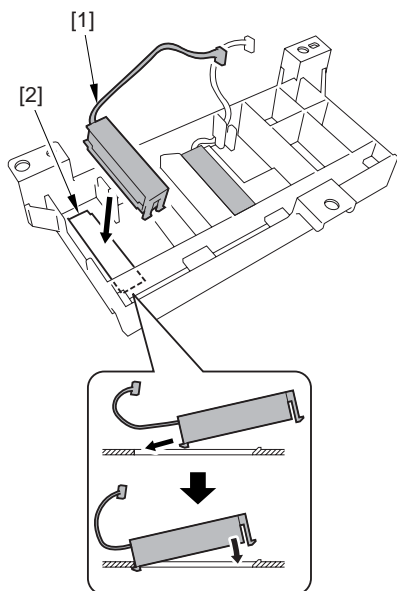
Pay attention to the location of mounting, as it differs between AB-configuration and Inch- configuration.

- AB-Configuration



F-9

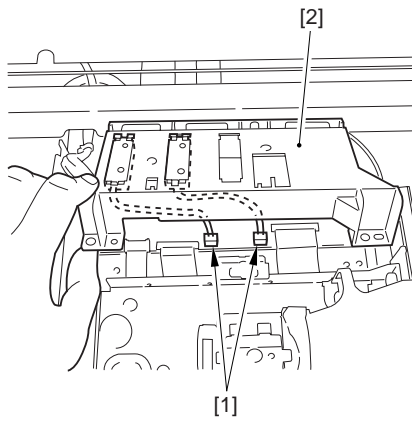
- Inch-Configuration



F-10

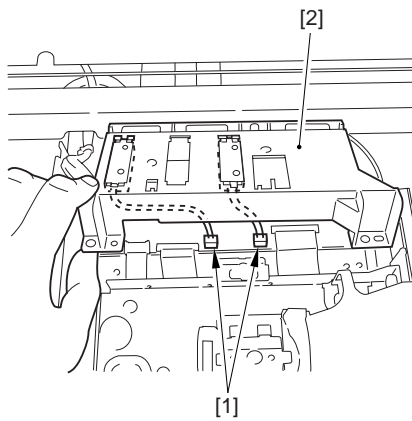
7) Fit the harness [1] to the connector [2].

- AB-Configuration



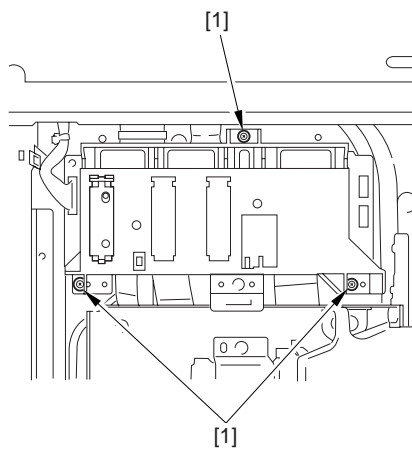
F-11

- Inch-Configuration



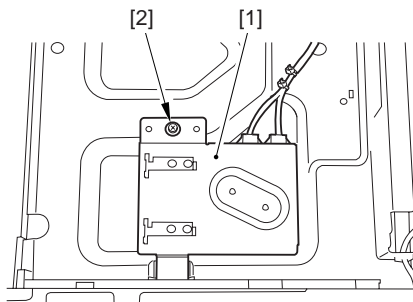
F-12

8) Secure the original size detection unit [1] in place using 3 screw [2].



F-13

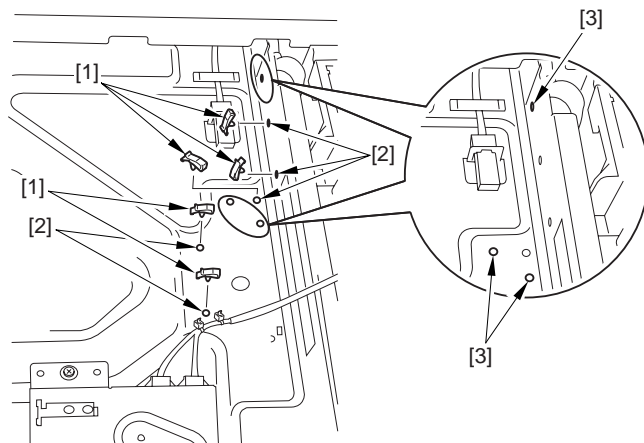
9) Secure the vertical size sensor unit [1] in place using a screw [2].



F-14

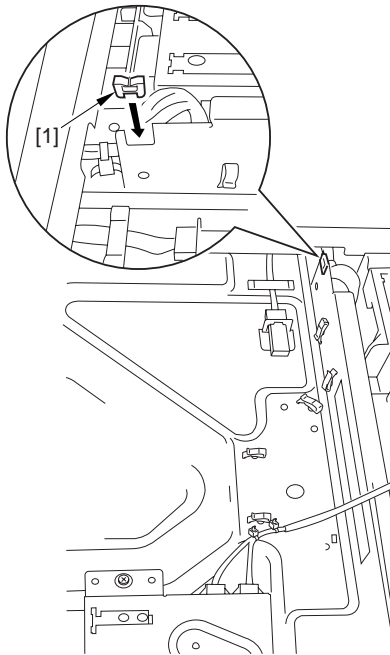
10) Fit the included clamp [1] into the hole [2].

⚠ There are multiple holes. Be sure to use the correct hole. (Do not use the hole identified as [3].)



F-15

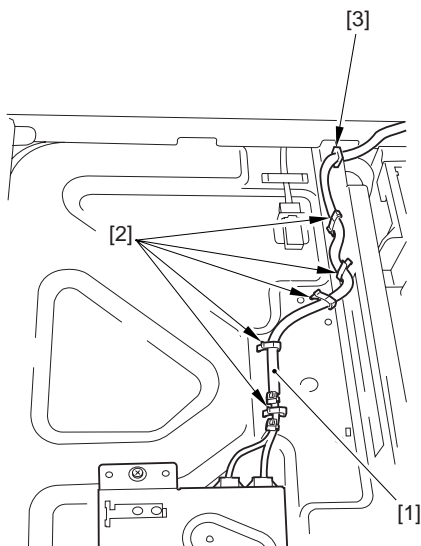
11) Fit the included edge saddle [1] as shown.



F-16

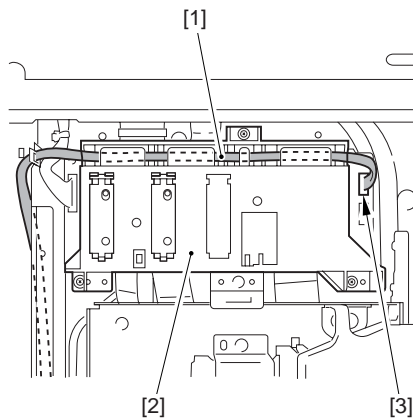
⚠ If an edge saddle already exists, skip this step.

12) Fix the harness [1] in place using 5 clamps [2] and the edge saddle [3].



F-17

13) Route the harness [1] through the original size detection unit [2]; then, connect it to the connector [3].



F-18

14) Mount the CCD unit cover, copyboard glass, right glass retainer, and reader right cover by following the steps used to detach them but in reverse.

15) Connect the power cable to the power outlet, and turn on the main power switch.

16) Set '1' to the following service mode item: COPIER>OPTION>BODY>SZDT-SW (Category2); then, turn off and then on the main power.

17) Check to make sure that the size of originals is correctly identified without the scanning lamp going on.